

DRAETHEN
CONSERVATION AREA
ENHANCEMENT PLAN

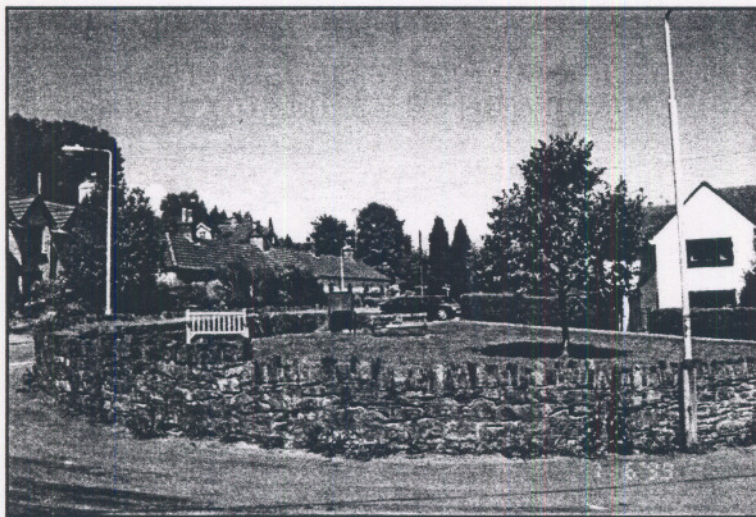
Adopted Plan

CANLLAW GWELLIANT

ARDAL GADWRAETH

DRAETHEN

Cynllun Mabwysiedig



Village Green, Draethen

(CAEP 1.)



Planning Division, Directorate of Technical Services
Is-Adran Gynllunio, Cyfadran Gwasanaethau Technegol

December 2000
Rhagfyr 2000

Draethen Conservation Area Enhancement Plan

Adopted Plan

Cynllun Gwelliant Ardal Gadwraeth Draethen

Cynllun Mabwysiedig

Contents

		<i>Page No.</i>
1	Introduction	1
2	Environmental Appraisal of the Conservation Area	1
3	Proposals	3
4	Implementation	4
Map 1	Draethen Appraisal	5
Map 2	Draethen Appraisal - Networks	6
Map 3	Draethen Appraisal - Facilities	7
Map 4	Draethen Enhancement Plan - Specific	8
Map 5	Draethen Enhancement Plan - General	9

(CAEP 1)

December 2000
Rhagfyr 2000

1. INTRODUCTION

Status of this Document

- 1.1 This Enhancement Plan is intended as Supplementary Planning Guidance to the Unitary Development Plan - the Council's main land use planning policy document.
- 1.2 It analyses the positive and negative aspects of the environment of Draethen Conservation Area and puts forward proposals to enhance this environment. (See Map 1)
- 1.3 It complements the Draethen Conservation Area Design Guide (CADG1) - a separate document - which contains an analysis of the conservation area's special character and puts forward policies and guidelines to maintain and enhance that character.

Purpose of the Draethen Enhancement Plan

- 1.4 By identifying positive and negative features of the conservation area, the measures necessary to enhance the Conservation Area are identified in this Plan. The Enhancement Plan will thus provide a **programme of action** to be implemented by the Council and other concerned organisations and will also be used to support bids for funding or grant aid to enable the programme to be implemented.
- 1.5 The object of the plan is not to "prettify" the Conservation Area at the expense of its original character, but to remove or screen inappropriate features and to emphasise and enhance those positive aspects which reflect the original character of the village.

National Policy Context

- 1.6 Conservation Areas were first introduced by the Civic Amenities Act 1967. Section 69 of the Town & Country Planning (Listed Buildings and Conservation Areas) Act 1990 imposes a duty on local authorities 'to determine which parts of their area are of special architectural or historic interest, the character or appearance of which it is desirable to preserve or enhance'. The Act also requires that local authorities publish proposals for the preservation and enhancement of these Conservation Areas, which should include 'an appraisal of strategies for the future and relate these to an appraisal of the area's special interest'.
- 1.7 Welsh Office Circular 61/96 states that:- 'Local Plan policies and development control decisions which relate to a conservation area will have a sounder basis, and make more positive contributions to long term aims, if the character of each conservation area is defined and policies for its enhancement set out in detail'.

2. ENVIRONMENTAL APPRAISAL

Positive Features

- 2.1 The **setting of Draethen**, nestling between steep wooded slopes, is an essential element in the village's overall rural character. Mature trees are very much in evidence within the village, which is enclosed by Forestry Commission woodland on the upper slopes. An inner belt of sloping agricultural land, comprising small fields divided by hedgerows, lies between the village and the woodland, being mainly arable with some pasture.

- 2.2 The **junction of the Rudry and Michaelston-y-Fedw roads** has a traditional style red telephone box, post box and finger post, which all contribute to the rural village atmosphere.
- 2.3 The **Hollybush Inn and the stone bridge across the Nant-y-Draethen** are key features which contribute to the pleasant village atmosphere.
- 2.4 Despite the widespread renovations and improvements that have been carried out on individual properties, **much of the original character remains in the historic village area** in the form of the local rural, "gabled" style of architecture, with a few cottages also retaining their stone-tied roofs. The historic village area is identified in Map 1.
- 2.5 There is a **network of paths** leading into Draethen including the long distance Rhymney Valley Ridgeway Walk. (See Map 2)
- 2.6 The **mature hedgerows, stone boundary walling and mature trees throughout the village** are significant linking elements in the overall character of the village.
- 2.7 The existing **play area** has potential for enhancement to strengthen the character of the village.
- 2.8 The **narrow roads leading into Draethen** are flanked by mature hedging, providing attractive and appropriate approaches into the village, while the absence of a suburban pavement network, adds to the historic ambience of the area.

Negative Features

- 2.9 **Overhead telephone and electricity wires** are abundant throughout the village, although their negative impact is lessened by the backcloth of the surrounding vegetation.
- 2.10 There is a **lack of road signage** around Draethen, and together with this being a through route, this does not give any sense of either arrival or departure to the village.
- 2.11 There is no **interpretative signage** to inform either the resident or visitor of the Conservation Area or its local features.
- 2.12 The narrow roads and absence of suburban pavements in the village add to the historic ambience of the area - see paragraph 2.8. However, it also **limits pedestrian access and forces pedestrians to use the highway**.
- 2.13 **Areas of open space are uninspiring** and as a result are not well used or are inappropriately used for extra parking. They tend to be unrelated and unconnected. (See Map 3)
- 2.14 The **street furniture** at Draethen is ill-matched and generally in a poor state of repair, while seats are randomly positioned so that there is no benefit from the existing views.
- 2.15 There are a number of structures in the village, which detract from the overall character of the area, including the redundant **lighting columns in front of the Hollybush Inn**.
- 2.16 Draethen is characterised by narrow winding, country roads approaching the village as well as within it, flanked by mature hedgerows. Although this is an essential part of the character and setting of the Conservation Area, it can give rise to traffic problems. **Traffic speeds** are unrestricted and increasing levels of roadusers are perceived to be driving through the village.
- 2.17 **Parking facilities** for residents and visitors are limited in the village.

3. PROPOSALS

Traffic Calming

DCA1 'GATEWAYS' WILL BE CREATED ON THE FOUR VILLAGE APPROACH ROADS. THE 'GATEWAYS' WILL COMPRISE SIGNAGE ANNOUNCING THE CONSERVATION AREA AND URGING DRIVERS TO DRIVE WITH CARE.

DCA2 TRAFFIC CALMING MEASURES MAY BE INTRODUCED, IF APPROPRIATE.

Enhanced village signage, together with traffic calming, will help to improve the sense of arrival and improve initial impressions of the area. However, signage will be limited and discreetly sited in the village. Traffic calming measures would have to be sensitively designed to complement the character of the Conservation Area. The 'gateways' may incorporate a logo or symbol of the Conservation Area. (See Map 5 for indicative location of the Gateways)

Street Furniture

DCA3 STREET FURNITURE WILL BE INTRODUCED WHERE APPROPRIATE. SEATS, PLANTERS, POST BOXES, STREET SIGNS, AND LITTER/GRIT BINS SHOULD BE CONSTRUCTED OF MATERIALS, COLOURS AND FINISHES APPROPRIATE TO THE RURAL SETTING OF THE VILLAGE.

Street furniture should be minimal in rural areas. The furniture should be easy to maintain and sited discreetly - for example against a wall rather than free standing. The introduction of a uniform style would add to the character and setting of the area. The Council will encourage the use of local materials (eg locally sourced hardwoods for benches etc) in the provision of street furniture.

Street lighting

DCA4 TRADITIONAL STYLE STREET LIGHTING WILL BE INTRODUCED WHERE APPROPRIATE. STREET LIGHTING SHOULD BE SENSITIVELY DESIGNED IN ACCORDANCE WITH THE RELEVANT CODES OF PRACTICE TAKING INTO CONSIDERATION THE ENVIRONMENTAL IMPACT OF LIGHTING IN A RURAL SETTING.

Overhead Cables

DCA5 THE COUNCIL WILL SEEK THE REMOVAL ELECTRICITY AND TELEPHONE CABLES CONSERVATION AREA. PROPOSALS TO UNDERGROUND THEM WHENEVER POSSIBLE WILL BE SUPPORTED.

This can be very expensive and will be dependent on the co-operation of the utilities.

The Village Green

DCA6 THE VILLAGE GREEN WILL BE ENHANCED BY LANDSCAPING, STREET FURNITURE AND THE INTRODUCTION OF AN INTERPRETATIVE BOARD GIVING INFORMATION ABOUT THE CONSERVATION AREA.

The interpretative board could be sited discreetly either on the Village Green next to the village notice board or near the entrance to the Hollybush Inn on the route of the Ridgeway

Walk. The board will be bilingual and will provide information concerning the origins of the village including the 1919 plan of the area. The use of interpretative signage would improve local awareness of the Conservation Area and may also become an educational resource for visitors.

The Hollybush Inn

DCA7 THE COUNCIL WILL CONSULT WITH THE OWNERS OF THE HOLLYBUSH INN REGARDING IMPROVEMENTS TO THE ENVIRONMENT OF THE PUBLIC HOUSE. (SEE MAP 4)

The Children's Play Area

DCA8 THE CHILDREN'S PLAY AREA WILL BE ENHANCED BY REPLACEMENT PLAY EQUIPMENT, SUITABLE FURNITURE, LANDSCAPING AND PLANTING.

The existing children's play area will be improved and enhanced as a children's play area and an area of recreation / public open space. Improvements to this area should be based on the following objectives:

- *Upgrade the play equipment within the children's play area*
- *Improve the area to the rear of Nant-y-Felin as a garage and parking area*
- *Improve the access to the rear of Nant-y-Felin and separate the vehicular access from the footpath*
- *Regrade the banks of the Nant-y-Draethen*
- *Landscaping and planting*
- *Introduce a stone wall around the area*

DCA9 SIGNPOSTS WILL BE INTRODUCED FOR THE FOOTPATHS AND CYCLE PATHS THAT LEAD OUT OF THE VILLAGE.

Parking

DCA10 THE COUNCIL WILL REVIEW THE PARKING PROVISION IN THE AREA.

Consideration will be given to the adequacy of the existing parking provision for residents and visitors in the Conservation Area. Any subsequent proposals to improve the parking provision in the area will not compromise the overall objective of retaining the existing character of the Conservation Area.

4. IMPLEMENTATION

- 4.1 The Council has a limited conservation budget and will therefore apply for grant aid funding to implement the proposals. (eg: The Lottery funds and Cadw)
- 4.2 The Council will seek to implement these proposals over a period of years as and when funding becomes available.
- 4.3 The Council will seek to obtain the co-operation and participation of landowners, business communities and residents to promote the proposals to enhance the architectural heritage of Draethen Conservation Area.

MAP 1

Draethen Appraisal



MAP 2

Draethen Appraisal - Networks



MAP 3

Draethen Appraisal - Facilities



MAP 4

Draethen Enhancement Plan - Specific



MAP 5

Draethen Enhancement Plan - General

