

21st Century Schools – Consultation Report

Children and Young People's Summary


YSGOL GYMRAEG CWM GWYDDON



Ysgolion yr 21ain Ganrif
21st Century Schools



Llywodraeth Cymru
Welsh Government



Hi, I'm **Vision** and this is
my dog **K9-2.1**
We're back to talk to you
about what we found out
when we asked people
about the proposal and
what happens next

Ysgolion yr 21ain Ganrif
21st Century Schools

What we'll talk about:

- What this presentation is about?
 - What is the 21st Century Schools Programme?
 - What was the project being proposed?
 - Why this school?
 - What options were considered?
 - Why consult?
 - How did we carry out the consultation?
 - Implications of COVID19
 - Who did we talk with?
 - What information did we make available?
 - How could you tell us what you think?
-
- Consultation Responses
 - What did people say about the proposal?
 - What did Scrutiny say about the proposal?
 - What did Estyn say about the proposal?
 - What were the common themes raised?
 - What were the reasonable alternatives?
-
- How did we get you and other pupils involved?
 - What were the key policies?
 - What are we recommending happens next?
 - Who makes the decision and how?
 - Where can I find out more?



Foreword

“Working together to deliver the best outcomes for all our children”

- ✓ We have bold ambitions to provide every learner with the best life chances.
- ✓ As part of this proposal a consultation exercise has been carried out in line with the requirements of the School Organisation Code 2018.
- ✓ This Consultation Report has been produced to summarise the issues raised by consultees during the consultation period.
- ✓ It aims to support Cabinet in deciding whether to progress with the proposal, make changes or not to progress.

I hope you find this document informative as a reflection of the activities undertaken to date and an insight into the journey we are on, shaping delivery and placing learning provision at the heart of our communities.

- **Richard Edmunds**, Corporate Director for Education and Corporate Services





Introduction

- What this presentation is about?
- What is the 21st Century Schools Programme?

- ✓ Caerphilly Council wants to improve school conditions to raise standards and give every child the best possible start in life.
- ✓ Sometimes schools can be modernised, repaired, refurbished, extended or a new school built entirely.
- ✓ The 21st Century Schools and Colleges Programme is a partnership between the Council and Welsh Government.
- ✓ Ysgol Gymraeg Cwm Gwyddon has been identified as one of the first priority projects in the 21st Century Schools Band B programme.



Llywodraeth Cymru
Welsh Government



Ysgolion yr 21ain Ganrif
21st Century Schools



Proposal

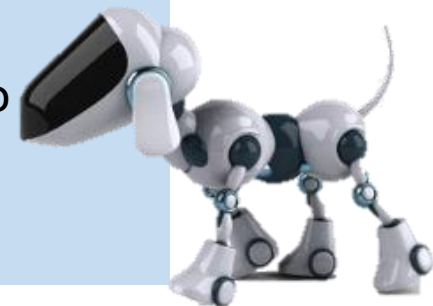
- What was the project being proposed?

We are proposing to:

Relocate Ysgol Gymraeg Cwm Gwyddon to a new purpose built Welsh-medium provision school to be situated on the vacant site of the former Cwmcarn High School (*Cwmcarn, NP11 7NG*) with an anticipated occupation date of September 2023

- It is proposed that the new building will incorporate a primary facility with Childcare, Special Resource Base (SRB), Nursery, Rising Threes and main school classrooms, main assembly hall, food technology space, a library and IT space
- The proposed project will take into account the desire to encourage and facilitate community use of the asset. The design process will seek to include measures to enable safe 'zoning' of parts of the new school building, including the hall and a multi-functional classroom compliant space which could be adapted for use

The Welsh in Education Strategic Plan sets out Caerphilly's commitment to the Promotion of Welsh language and the provision of quality, attractive educational facilities.





Proposal

- Why this school?

✓ Proposals have been prioritised based on:

- Building condition
- Pupil projections
- Local and national drivers

The delivery of the curriculum and the Educational agenda remains at the core.

- ✓ All pupils across the Borough are entitled to receive high quality provision that meets their needs, no matter where they live.

We identified a need to invest in Ysgol Gymraeg Cwm Gwyddon, meeting the increasing demand for education in Welsh and developing shared and co-located facilities. It is this aspiration that is driving this proposal.





Proposal

- What options were considered?

- ✓ The Council has to consider a number of options for every proposal
- ✓ Each option is scored against a 'shopping' list of criteria to find the one with the best Strategic, Educational, Accessibility, Financial and Environmental Fit

Option	Description
Option 1	Do Nothing
Option 2	Refurbish existing school which has already met the 60-year life expectancy
Option 3	Build new school same size school on the existing site
Option 4	Build a new school, same size school on a new site with childcare
Option 5	Build a new, larger school on a new site with nursery, childcare and Special Resource Base



- ✓ **Option 5** being was the preferred option
- ✓ Build a new, larger school on a new site



Proposal

- Why Consult?

- ✓ There are common challenges faced by all Local Authorities when adopting new proposals.
- ✓ Evidence shows that the best way to ensure successful delivery is by setting up projects correctly in the first place.
- ✓ As part of the development of the proposal, a number of benefits and disbenefits were identified as outlined in the Consultation Document.
- ✓ An Equality and Welsh Language Impact Assessment and a Community Impact Assessment were carried
- ✓ The consultation process was an opportunity to consult with relevant stakeholders to understand what they see as positive outcomes and what negative consequences may be delivered.





The Consultation Process

- How did we carry out the consultation?

- ✓ The Council has to follow a piece of legislation produced by the Welsh Government called the **School Organisation Code 2018** when they want to make any changes to a school.
- ✓ This proposal falls under the heading called making a *'Regulated Alteration to a Maintained school'*
- ✓ A formal consultation process was followed and a Consultation Document was published in both hardcopy and electronic version

The Consultation period started on **Monday 14th September 2020** and closed midnight on **Monday 26th October 2020**



- ✓ The full process was explained in the full Consultation Document
More information can be found here: www.caerphilly.gov.uk/Services/Schools-and-learning/21st-Century-Schools



The Consultation Process

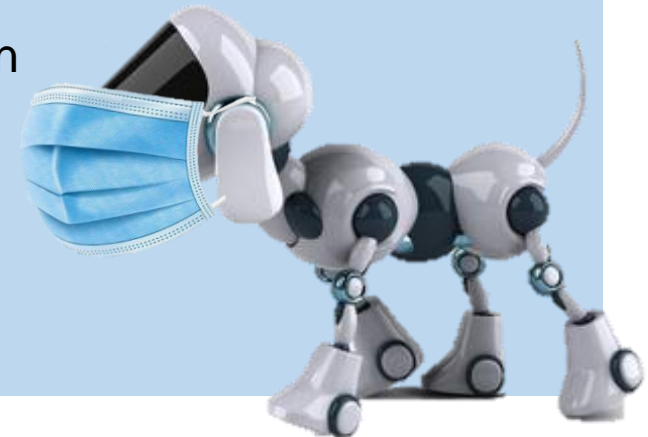
- Implications of COVID19

Due to the implications of COVID-19 at the time this consultation was due to take place and after taking advice from Welsh Government,

No face-to-face consultation sessions took place with the 21st Century Schools Team to support social distancing and maintain safe working practices for all.

Instead, we :

- Worked closely to help teachers talk to pupils directly
- Used Social media to tell everyone about the consultation
- Used Face-time technology with our Scrutiny Committee
- Produced a ['Frequently Asked Questions'](#) Webpage





The Consultation Process

- Who did we talk with?



- ✓ The **School Organisation Code 2018** says that the Council has to write to a number of groups (by letter or email) and tell them about what they would like to do, this includes:

- Parents
- Pupils
- Headteachers, Staff and Governors of the schools affected
- Other neighbouring Local Authorities
- The Welsh Minister
- Local Town and Community Councils
- ESTYN

- ✓ A letter was put together in Welsh and English and sent to all the groups listed in the Code

- ✓ The Council also sent the letter to the Welsh Language Commissioner

- ✓ We also used Social Media and Text Messaging to spread awareness of the consultation





The Consultation Process

- What information did we make available?

The Council must publish information to enable transparent, balanced and open decision making.

- ✓ The consultation document must be published on a school day
- ✓ Consultees must be given at least 42 days to respond to the document
- ✓ With at least 20 of these being school days as defined by **Section 579 of the Education Act 1996**

As part of this proposal, the following documentation was produced:

- Consultation Notification Letter
- Consultation Document
- Child Friendly Consultation Summary
- Consultation Video
- Artist's Impression of proposed new school
- Consultation Response Form (Online)
- Consultation Response Form (Printable PDF)
- Equalities and Welsh Language Impact Assessment





The Consultation Process

- How could you tell us what you think?



- ✓ Anyone wishing to comment in relation to the proposal could do so in writing by:
 - Completing the online response form on the Council's website
 - Completing a response pro forma and posting it to the 21st Century School Team at Caerphilly
 - Emailing comments to the 21st Century Schools Team at Caerphilly

This consultation was undertaken to capture the views of consultees in relation to the proposal to expand the school. These views have been incorporated into the full Consultation Report, which will be published and considered by Cabinet when determining whether to proceed to the next stage.



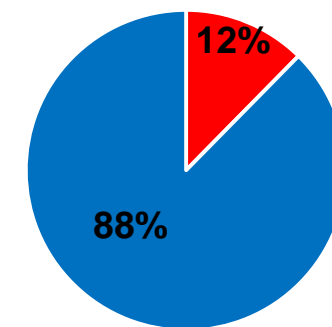
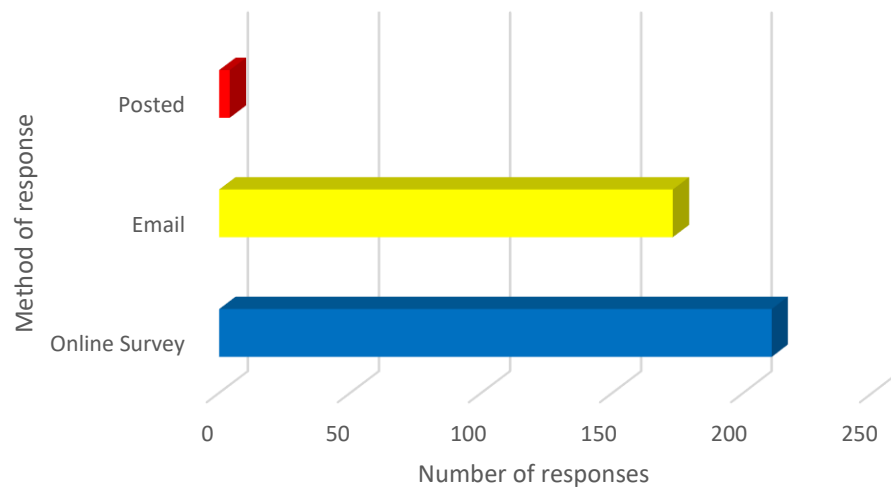
Consultation Responses

- How did people respond?

✓ **388** responses were received

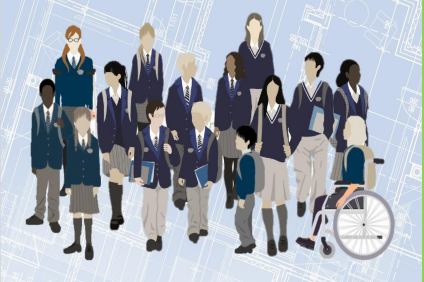
- 211 responses received via Online Survey
- 173 responses received via email
- 4 responses received via post

- 48 responses were returned in Welsh
- 340 responses were returned in English



■ Returns in Welsh ■ Returns in English





Consultation Responses

- Who responded?

- ✓ As part of **Question 1**, the consultees were asked to identify a category that best described them in relation to the proposal for the school affected.
- ✓ The options provided were selected to demonstrate that the key consultee groups as outlined in the **School Organisation Code** had been engaged with.

- 
- 204 Pupils
 - 92 Parents
 - 17 Staff
 - 5 School Governors
 - 1 Elected Members
 - 61 Other
 - 8 No Comment



53%	24%	4%	1%	0.2%	18%
Pupils	Parents	Staff Members	School Governors	Elected Members	Other

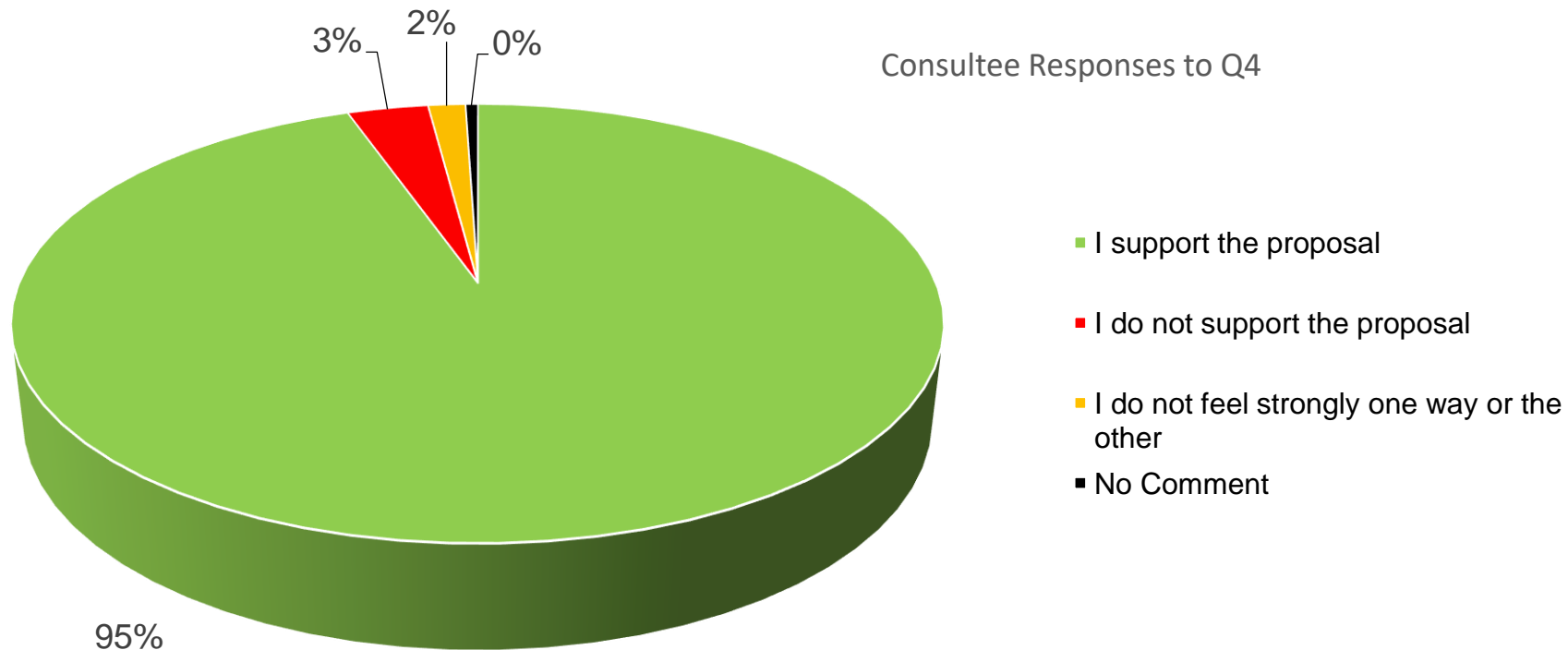


Consultation Responses

- What did people say about the proposal?

✓ As part of **Question 4** , consultees were asked to indicate which of the following statements most accurately reflected their views about the proposal.

The options available were:

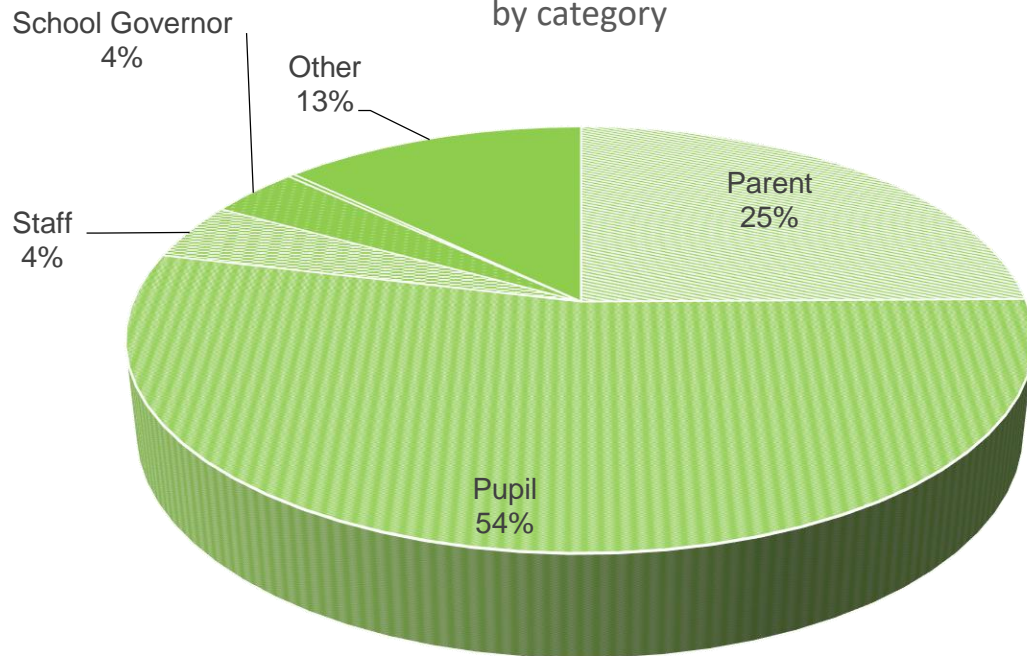




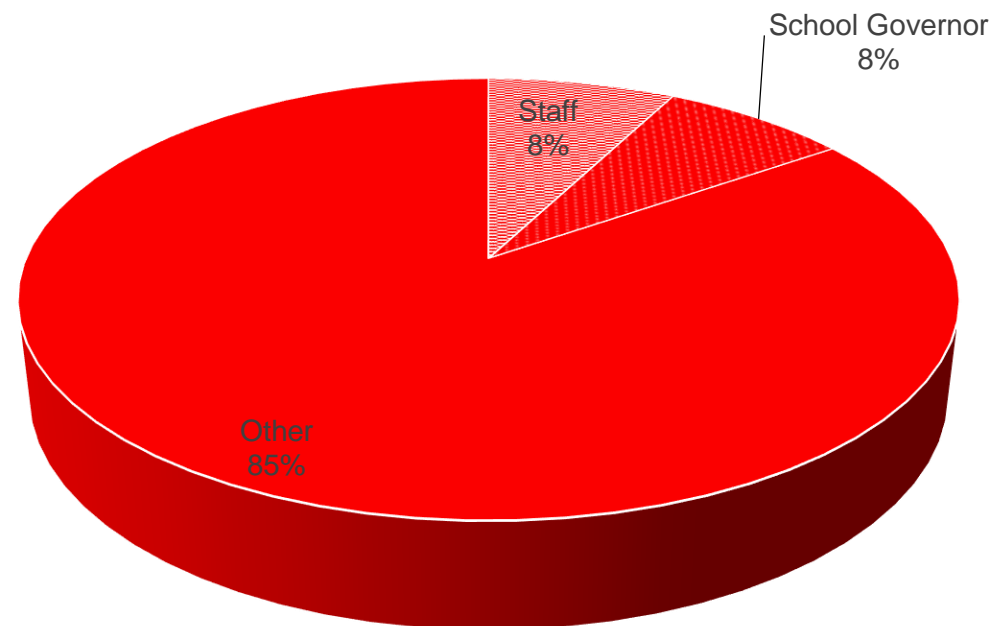
Consultation Responses

- What did people say about the proposal?

I support the proposal
by category



I do not support the proposal
by category





Consultation Responses

- What did Scrutiny say about the proposal?

- ✓ The Council's Education Scrutiny Committee is a consultee for any policy or service developments in relation to Education within the Borough.
- ✓ A digital meeting via Microsoft teams took place on Tuesday 22nd September 2020 at 5.30pm.
- ✓ All consultation documentation was made available to members as part of the agenda reports pack and officers linked to the proposal were available to take questions.
- ✓ The Committee members voted unanimously in favour of the proposal for Ysgol Gymraeg Cwm Gwyddon.



A recording of the session is available on YouTube:

[Education Scrutiny Committee Meeting](#)

The agenda item linked to this proposal starts 18 minutes and 50 seconds in to the recording.

- ✓ The [Notice of the Decisions](#) document is also available to view on the Council's website.





Consultation Responses

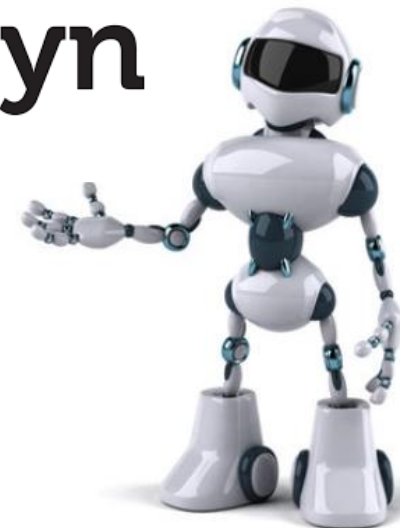
- What did Estyn say about the proposal?

- ✓ Under the terms of the **School Standards and Organisation (Wales) Act 2013** and the **School Organisation Code 2018**, the Council, as the proposers, is required to send a notification with regards to the consultation to Estyn.
- ✓ Estyn is the education and training inspectorate for Wales and their vision is to improve the quality of education and training and outcomes for all learners in Wales
- ✓ Estyn has considered the educational aspects of the proposal.

In summary

“It is Estyn’s view that the proposal is likely to at least maintain the current standards of education and provision in the area. However, the proposer has not provided enough clarity regarding mitigation against the risk of the proposal generating a significant number of surplus places at the new school site.”

The full response from Estyn can be found in the full Consultation Report





Consultation Responses

- Clarification

- ✓ When analysing the consultation response comments received as part of the consultation period, there were:
 - General Themes
 - Areas of concern
 - Areas of Agreement
- ✓ To assist Cabinet in the decision making process, the Council provided responses to each of these areas.
- ✓ The Council responses can be found in the full Consultation Report





Consultation Responses

- What were the common themes raised?

- ✓ As part of **Question 5**, there was a free text box, enabling consultees to provide additional comments on the proposal.

General themes that emerged from the consultation:

- Acknowledgement that the current Ysgol Gymraeg Cwm Gwyddon site is restrictive, developed to 'its full potential' and has 'outgrown current site'
- The proposal supports the increasing demand for Welsh Language provision in the area
- Concerns over proposed use of the large site in Cwmcarn for a Primary School only
- Concerns over safety and traffic management at current and proposed site
- Concerns over impact proposal will have on English medium provision in the area
- Preference for utilisation of the site for a new building English medium comprehensive





Consultation Responses

- Areas of widest concern

When analysing the consultation response comments, a number of recurring areas of concern became evident.

➤ **Use Identified for proposed relocation site**

8 mentions

Size of site, Why primary provision?

➤ **Secondary Provision**

9 mentions

New English-medium Build, Demand for English-medium, Newbridge/Risca Comprehensive school capacity

➤ **Investment in Schools**

4 mentions

English Medium Schools, Other Primary Schools in the area

➤ **Traffic Management**

6 mentions

Transportation of pupils, Increased traffic flow at proposed site, Access and parking





Consultation Responses

Clarification to
Areas of widest concern

- ✓ To assist Cabinet in the decision making process, the following information is provided by means of response for clarification with supporting reasons.

Use Identified for proposed relocation site

- The current site for Ysgol Gymraeg Cwm Gwyddon has reached its full potential.
- There is growing demand for Welsh medium primary provision and this proposal aims to address that issue.
- The planned footprint of the new primary school will also allow for future expansion, including the potential for secondary Welsh medium education

- ✓ The Council responses can be found in the full Consultation Report





Consultation Responses

Clarification to
Areas of widest concern

- ✓ To assist Cabinet in the decision making process, the following information is provided by means of response for clarification with supporting reasons.

Secondary Provision

- The Council is dedicated to providing educational facilities that meet the needs of our pupils and local communities.
- There is no requirement identified for an additional English medium secondary provision

School	Capacity	Number on Roll Sept 2020	% Catchment pupils on roll	% Out of Catchment	% Out of County
Newbridge	1017	991	65.59%	17.46%	16.95%
Risca	729	661	82.45%	12.56%	4.99%

- As part of the 21st Century Schools Band A programme, Newbridge School received an investment of £2 million to provide an additional 9 classrooms and ancillary facilities.
- ✓ The Council responses can be found in the full Consultation Report



Consultation Responses

Clarification to
Areas of widest concern

- ✓ To assist Cabinet in the decision making process, the following information is provided by means of response for clarification with supporting reasons.

Investment in Schools

- The Council is dedicated to providing all learners with quality learning opportunities.
 - The Council continuously improves the quality of school buildings through the Capital Investment Programme.
 - Ysgol Gymraeg Cwm Gwyddon has been prioritised as the school at its current location has reached its capacity in relation to any further developments on the existing grounds.
 - Local English medium provisions have that opportunity moving forward should the demand be required.
- ✓ The Council responses can be found in the full Consultation Report



Consultation Responses

Clarification to
Areas of widest concern

- ✓ To assist Cabinet in the decision making process, the following information is provided by means of response for clarification with supporting reasons.

Traffic Management

- As part of any development, the Council is committed to providing safe, efficient and effective traffic management.
- The site identified for the relocation of Ysgol Gymraeg Cwm Gwyddon is the former Cwmcarn High School site.
- The safety of children is of paramount importance and the Learner Travel (Wales) Measure 2008 requires local authorities to assess the suitability of travel for learners between home and places of education and training.
- This proposal will be subject to full planning application process and a wide range of consultees will be invited to comment, including the Highways Department.

- ✓ The Council responses can be found in the full Consultation Report



Consultation Responses

- Areas of widest agreement

✓ When analysing the consultation response comments, was a level of agreement with the proposals became evident.

➤ **The condition and suitability of the existing site occupied by Ysgol Gymraeg Cwm Gwyddon**

257 mentions

Current Capacity, Maximum site developed, Standards / Quality, Site accessibility, Parking / Drop Off

➤ **There is Growing Demand for Welsh-medium provision**

90 mentions

Welsh medium demand increasing in the identified area, Parental Choice, Bilingualism

➤ **The need for Additional Facilities**

222 mentions

Outdoor facilities, Health, wellbeing and learning experiences, Community Use





Consultation Responses

- Reasonable Alternatives

- ✓ Following the consultation period, the Council is required to carry out a further assessment for the proposal.
- ✓ The purpose of this further assessment is to take account of any further information that has come forward through the consultation or otherwise.
- ✓ The following alternative options have been raised via Consultees:
 - *Relocate Ysgol Gymraeg Cwm Gwyddon school to another location such as Ty Sign*
 - *Build an English Medium Secondary school on Cwmcarn*
Variations include: New school to replace Cwmcarn high, New school to accommodate Newbridge School pupils, New school to amalgamate Newbridge and Risca
 - *Build a new co-located Welsh and English Medium Primary provision on the Cwmcarn site*
- ✓ Each Option has been considered and an assessment carried out.
- ✓ We looked at the impact on Quality and Standards in Education, the community and effect on different travelling arrangements.
- ✓ Each option was discounted and the assessment and reasons are available in the full Consultation Report

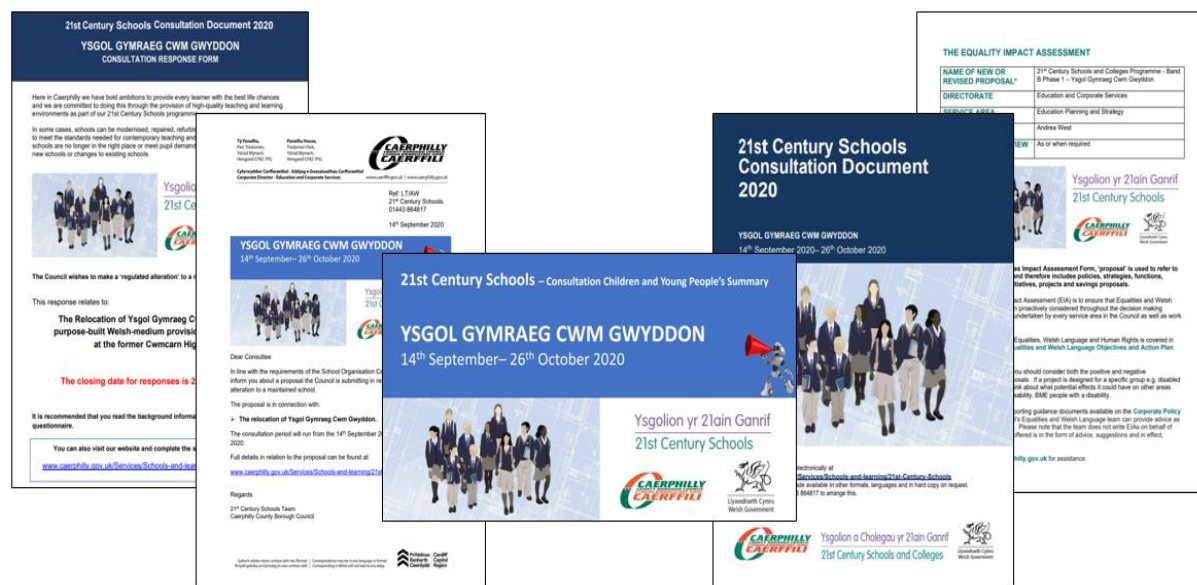




Pupil Voice

- How did we get you and other pupils involved?

The Council recognises the potential of young people to enrich decision-making processes, to share perspectives and to participate as citizens and facilitators of change.



Everyday Summary Version

A summary version of the main consultation document was also prepared, published and targeted specifically at children and young people.

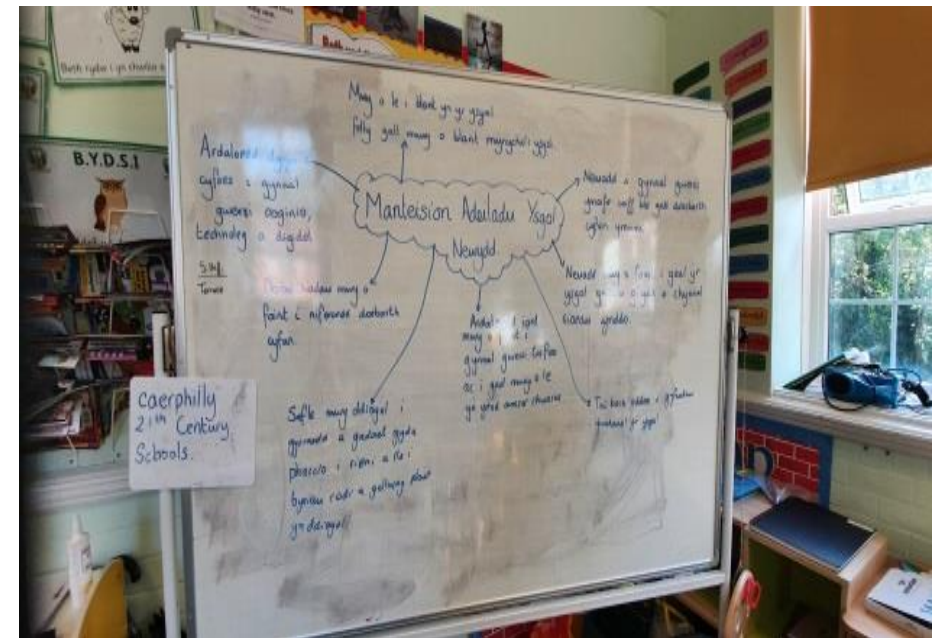


Consultation Video

Pupils from the school contributed to the content and participated in the consultation video.



- ✓ Pupils play an active and influential role in shaping the life and work of the school.
- ✓ Suitable arrangements are made to consult and involve pupils throughout the process.



Images from a Consultation Sessions undertaken with pupils at Ysgol Gymraeg Cwm Gwyddon



Pupil Voice

- How did we get you and other pupils involved?



Wordcloud generated from key words provided by pupils at Ysgol Gymraeg Cwm Gwyddon



Other Considerations

- What were the key policies we needed to think about?



“Our national mission is to raise standards, reduce the attainment gap and deliver an education system that is a source of national pride and confidence.”

Kirsty Williams AM
Cabinet Secretary for Education

- There are a number of local and national strategies that drive Educational reform

[Welsh Government - Education in Wales: Our National Mission](#)
[Welsh Language Act 1993](#) / [Welsh Language \(Wales\) measure 2011](#)
[Additional Learning Needs and Educational Tribunal \(Wales\) Act 2017](#)
[Welsh Government - 21st Century Schools and Colleges Programme](#)
[Caerphilly - 'Shared Ambitions' Education Attainment Strategy 2019 - 2022](#)





Next Steps

- What are we recommending happens next?

Recommendation

In reviewing the proposal to take account of further information that has come forward through the consultation and in consideration of the likely impact on quality and standards in education, the community and travelling arrangements, it is the recommendation of this report that the proposal is progressed as outlined in the Consultation Document, namely:

Relocate Ysgol Gymraeg Cwm Gwyddon to a new purpose built Welsh-medium provision school to be situated on the vacant site of the former Cwmcarn High School to include Childcare and Special Resource Base provision





Next Steps

- Who makes the decision and how?



- ✓ To deliver our reforms across the entire system, we will need a bold commitment to effective collaboration along with integration of services where appropriate.
- ✓ Cabinet Members are asked to note the information contained within the full Consultation Report and to seek members views as to whether
 - to proceed
 - make changes
 - not to proceed

.... with the proposal in relation to the proposal to relocate and expand Ysgol Gymraeg Cwm Gwyddon.



Find Out More

- ✓ The purpose of the consultation was to gain views on the proposal to support and invest in the relocation of Ysgol Gymraeg Cwm Gwyddon.



- ✓ The Full Consultation Report is divided into several sections with the aim to:
 - Outline the consultation processes undertaken
 - Provide clarification in relation to the information provided and consultee engagement
 - Summarise each of the issues raised by consultees
 - Set out Estyn's response to the consultation in full
 - Respond to issues raised by means of clarification, amendment to the proposal or rejection of the concerns, with supporting reasons
- ✓ The Consultation report will be published on the Caerphilly 21st Century School website with hardcopies available on request.
- ✓ All information is published in Welsh and English.